

Ferretti Yachts 530 – PRIMO

Make:	Ferretti Yachts	Boat Name:	PRIMO
Model:	530	Hull Material:	Fiberglass
Length:	52 ft 6 in	Number of Engines:	2
Price:	\$ 990,000	Fuel Type:	Diesel
Year:	2014		
Condition:	Used		

PRIMO

2014 FERRETTI 530 MOTOR YACHT

This 2014 Ferretti 530 is new to the market and priced for immediate sale. She's been professionally maintained with an open checkbook, the engines and generators were recently serviced.

Features include: Bimini top with enclosure, crew cabin and low low engine hours on a 2014 model. Easy to preview in Aventura, FL ... call today as this one will not last.

Measurements

Cruising Speed:	28 kn	Displacement:	61729
Max Speed:	32 kn		lb
Range:	250 nmi	Fuel Tanks Capacity:	539
LOA:	55 ft		gal
Beam:	16 ft 2 in	Fresh Water Tanks Capacity:	188
Min. Draft:	4 ft 8 in		gal
		Number of Cabins:	3
		Number of Heads:	2

Propulsion

Engine #1

Engine Make:	MAN	Hours:	676
Engine Model:	R6	Power:	800 hp
Primary Engines:	Inboard		

Engine #2

Engine Make:	MAN	Hours:	676
Engine Model:	R6	Power:	800 hp
Primary Engines:	Inboard		

Additional and Custom Items

- Flybridge Bimini top with enclosure
- Crew cabin
- Watermaker
- Teak decking (partial)
- Brand new steering system
- Self-centering electric steering with watertight enclosure

- A/C pumps and black water pump recently replaced
- Spare props

Salon

- Custom Decor Package
- Wood floor in salon entrance and galley
- Bose 3-2-1 Surround Sound System in Salon
- SAT TV Antenna with Receiver in Salon
- Malber Washer/Dryer in Utility Room

Galley

- Refrigerator
- Icemaker
- GE microwave oven
- Bosch 4-burner cooktop
- Ventilation fan

Master Cabin

- Fusion Mini Hi-Fi CD/DVD stereo
- TV
- Fusion iPod docking station

Cockpit

- Folding glass table

- Countertop

Electrical

- 13.5kW Onan generator (1,882 hours as of April 25, 2019) with smoke separator
- Battery cut-offs on generator battery
- Single Racor generator filter
- 50A Sterling galvanic isolator
- 50A/240V Glendinning shore power
- 24V/240V Voltage measuring system

Engine and Mechanical

- Side Power bow thruster
- Air conditioning
- Anti-incendiary Fire-Boy system
- Smoke detectors
- Deck connection for pumping down blackwater tank

Navigation

- Furuno depth, speed, and compass at helm/flybridge
- Furuno radar antenna in radar arch
- Furuno 3D radar/plotter at helm
- Furuno VHF in helm/flybridge

Flybridge

- Canvas package
- Mini Hi-Fi CD stereo
- Portable ½-mile 12V spotlight
- External sunpads and cushions & covers

Hull and Deck

- Storage room in stern
- Mooring cleats (2)
- Rubbing strake: Stainless steel with spoiler & side exhaust
- Life raft: 8-person
- Life jackets (8)

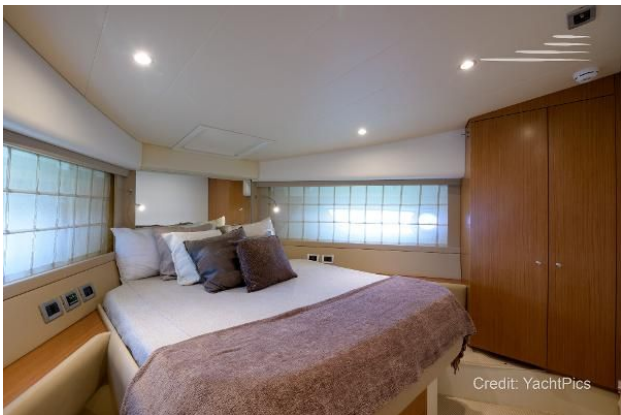
Disclaimer

The Company offers the details of this vessel in good faith but cannot guarantee or warrant the accuracy of this information nor warrant the condition of the vessel. A buyer should instruct his agents, or his surveyors, to investigate such details as the buyer desires validated. This vessel is offered subject to prior sale, price change, or withdrawal without notice.

Photos











****Standard manufacturer layouts, actual layouts may vary.*